

Building ANSWERS^{common}

The European Jewish Communities Summit

American Jewish
Joint Distribution
Committee



European
Council
of Jewish
Communities



JDC International
Centre for
Community
Development

Credits

Building Answers

Even if the Toulouse killings of March 2012 and the antisemitic wave that unfolded in the main European cities during the Operation Protective Edge were already pointing to an escalation of anti-Jewish violence in Europe, they were the attacks in Paris and in Copenhagen that have left Jewish communities in shock. These attacks have not only changed abruptly the communal agenda, repositioning issues related with security and disaster-responsiveness; they not only sparked, once again, a global conversation on the sustainability of Jewish life in Europe, but also, and fundamentally, gave place to a general awareness, shared by the majority of Jewish communal leaders in Europe, that this situation is here to stay.

How should our communities respond to this state of affairs? Are we prepared to face the coming years in Europe? What we should change or adapt to these new scenarios? What new infrastructure and services in the area of security and resilience should be put in place?

This situation is urgent and calls for the creating of a space where leaders and professionals across Europe, all together, could reassess priorities, project future scenarios for Europe and its Jewish life, and discuss common challenges.

JDC International Centre for Community Development, together with the European Council of Jewish Communities, are inviting Jewish leaders to the European summit in order to deal with this new reality. We are convinced that Europe's mounting antisemitism should be confronted with information, knowledge in the area of security, preparedness for crisis and resilience and collaborative strategies.

Program

Sunday, June 28th

- 12:00 Registration opens
- 13:00 Light Lunch
- 14:00 **Welcome: Why this conference?** Room: Berlin
Benjamin Albalas (President, ECJC)
Diego Ornique (JDC Regional Director for Europe)
Uri Benguigui (President of the Jewish Community of Barcelona, CIB)
- 14:30 **Opening Lecture: Community Resilience. Strategies to better face crises and disasters. Tools for Jewish leaders.**
Room: Berlin
David Gidron (Social Psychologist and expert in community resilience and emergency management, member of the JDC community resilience working group)
Chaired by: Marcelo Dimentstein (JDC Europe)
-
- Why are we speaking about “community resilience”? What are its constitutive elements? Why is it a useful concept for our communal agenda? This session will serve as an introduction to the field of resilience in general and community resilience in particular.*
- 15:30 Coffee Break
- 16:00 **Case Studies and debate: Learning from the Paris and Copenhagen communities.** Room: Berlin
Eric Ghozlan (Psychologist, Director of the Childhood Department, Project Manager of the Psychotrauma and Resilience Unit, OSE, France)
Dan Rosenberg (Chairman, Jewish Community in Denmark)
Chaired by: Mario Izcovich (JDC Europe)
-
- The attacks in Paris and Copenhagen taught a number of important lessons concerning different aspects of community resilience. In France, we saw how, during and after the crisis, the community put in place a very effective service to attend the psychosocial needs of the victims and of the community at large. In Copenhagen, the development of an ongoing communicational strategy months before the terrorist attack (to face the media and the public) increased the “bonding” among different sectors of the society*

17:15 Coffee Break

17:30 **Parallel Workshops**

Workshops will be repeated twice throughout the event in order to give everybody an opportunity to participate in all of them

1/ Risk communications in building resilience and assisting the community in times of crisis. Room: Mérida

By David Gidron.

Communications is a critically important tool by which community leaders can prepare the community for possible crisis situations, ensuring an ongoing and dynamic dialogue with community members during times of need. Effective risk communications provide the vital support, information and guidelines that the community requires. This workshop will provide a base for a risk communication plan in a crisis scenario that your community might face in the future.

2/ Practice makes Progress: the importance of emergency preparedness and community resilience. Room: L'auditori

By Taly Levanon (Israel Trauma Coalition).

In the workshop we will be sharing different models of creating resilient communities. Our focus is on a psychosocial preparedness and response system within communities. Working together with local leadership, the model maximizes resources and guarantees quick, effective and efficient response and recovery.

19:00 Free Time

20:00 **Dinner with keynote speaker.** Room: Berlin

Dominique Moïsi (Political Scientist)

Chaired by Mariano Schlimovich (ECJC)

Monday, June 29th

8:00 **Breakfast consultation**

Would you like to consult with an expert about your community or program? Do it over breakfast. Previous registration required.

09:15 **Panel: Scenarios for Europe and the Jews in the years to come.** Room: Berlin

Diana Pinto

Rabbi Michael Melchior

Jonathan Arkush (Board of Deputies, UK)

Chaired by Diego Ornique (JDC Europe)

Is there a “new normal” for Jews in Europe after the Paris and the Copenhagen attacks? Is it time to pack and leave or to reassert our belonging to Europe? What are the possible scenarios for Jewish life in Europe?

10:45 Coffee Break

11:00 **Parallel Workshops**

Workshops will be repeated twice throughout the event in order to give everybody an opportunity to participate in all of them

3/ How to protect our communities? Deterrence vs defensive paradigms. Room: L'auditori

By Lauder Foundation's Security Team.

Chaired by: Josh Spinner (CEO, Lauder Foundation)

This workshop focuses on one of the most critical issues in the current context: security. How to correctly assess our security policies in place in our buildings and during our programs? What are the new practices in the field? How to involve different stakeholders in this process? How to improve security with the existing budget? Can we reconcile security with a friendly welcome to strangers?

4/ Crisis Management. Room: Mérida

By Gabriela Jiraskova (Crisis Management Consultant, WJC).

The goal of this workshop is to introduce the principles of community crisis management and to analyze some of the dilemmas that community leaders might face during the crisis situations. Using real experiences taken place in Brussels, Paris and Copenhagen, participants will be asked to react to a situation that is developing having only limited information.

12:30 Lunch

14:00 Parallel Workshops

Workshops will be repeated twice throughout the event in order to give everybody an opportunity to participate in all of them

1/ Risk communications in building resilience and assisting the community in times of crisis. Room: Mérida

By David Gidron.

Communications is a critically important tool by which community leaders can prepare the community for possible crisis situations, ensuring an ongoing and dynamic dialogue with community members during times of need. Effective risk communications provide the vital support, information and guidelines that the community requires. This workshop will provide a base for a risk communication plan in a crisis scenario that your community might face in the future.

2/ Practice makes Progress: the importance of emergency preparedness and community resilience. Room: L'auditori

By Taly Levanon (Israel Trauma Coalition).

In the workshop we will be sharing different models of creating resilient communities. Our focus is on a psychosocial preparedness and response system within communities. Working together with local leadership, the model maximizes resources and guarantees quick, effective and efficient response and recovery.

15:30 Break

16:00 Panel: Radicalization, extremism and fundamentalism in Europe and their effects on Jewish communities. Room: Berlin

Péter Krekó (Director of Political Capital Institute, Hungary)

David Hatchwell (President, Jewish Community of Madrid)

Chaired by: Michael Blake (ECJC, Jewish Care UK)

17:30 Coffee Break

18:00 Parallel Workshops

Workshops will be repeated twice throughout the event in order to give everybody an opportunity to participate in all of them

3/ How to protect our communities? Deterrence vs defensive paradigms. Room: L'auditori

By Lauder Foundation's Security Team.

Chaired by: Josh Spinner (CEO, Lauder Foundation)

This workshop focuses on one of the most critical issues in the current context: security. How to correctly assess our security policies in place in our buildings and during our programs? What are the new practices in the field? How to involve different stakeholders in this process? How to improve security with the existing budget? Can we reconcile security with a friendly welcome to strangers?

4/ Crisis Management. Room: Mérida

By Gabriela Jiraskova (Crisis Management Consultant, WJC).

The goal of this workshop is to introduce the principles of community crisis management and to analyze some of the dilemmas that community leaders might face during the crisis situations. Using real experiences taken place in Brussels, Paris and Copenhagen, participants will be asked to react to a situation that is developing having only limited information.

19:30 What have we learnt? What can I take back home? Follow-up strategies. Room: Berlin

20:00 End of the Conference

20:30 Dinner

Speakers



David Gidron

is a social psychologist and expert in community resilience and emergency management. A Lt. Colonel in the IDF, David worked as an Organizational Psychologist in a variety of field units. He served as head of the Civil Emergency Behavior Branch in the Home Front Command. David has worked as an expert consultant and senior researcher of emergency management for private and public organizations in Israel and abroad. These include JDC-Elka, Israel Trauma Coalition (ITC), Mahut, NASTEC, the Gertner Institute. Later, under the ITC, he helped establish a network of community resilience centers in the north. Until recently, David was the professional director for the ITC and the Ministry of Welfare and the Ministry of Health for the five resilience centers in western Negev. David is a senior consultant for emergency preparedness for numerous municipalities, government ministries, private and public institutions and is a member of the JDC-Europe resilience work group.



Eric Ghozlan

worked as a clinical psychologist in different social-medical institutions. Since 2006 he is the OSE Director of the Childhood Department.

Eric is a member of the Scientific Council of SFPEADA (French Society of Child and Adolescent Psychiatry) and President of COPELFI (Franco Israeli Psychiatric Association of Child and Adolescent). In 2011 he created and directed a university degree in child protection at the University of Paris Diderot. Since 2009 his is in charge of the area of Psychology of the Crisis Management structure of the Jewish community in France.

During the hyper-kosher incident Eric and his team offered support to the hostages, their families and people with post-traumatic disorders.

Eric graduated with a Master Pathological Psychology and Executive Master of Sciences Po Paris « associative leader and organizational sociology»



Dan Rosenberg Asmussen

Chairman of the Jewish Community in Denmark since May 2014. Board member 2013-2014. Board of delegates 2011-2013. Civilian profession: Deputy Director, Association of Danish Pharmacies.



Talia Levanon

has a MSW in clinical social work from Bar Ilan University, a degree in Integrative psychotherapy and a BSW in Social Work from the Hebrew University. During the Yom Kippur War, Talia served as an IDF officer, working with bereaved families and wounded soldiers. Since 2001, she has directed the Israel Trauma Coalition (ITC), a collaborative network of over forty organizations committed to a proactive role in policy making and the provision of a systematic continuum of trauma related care and preparedness. With over 30 years' experience in the field of trauma care and bereavement, Talia is involved in national and international projects committed to developing emergency preparedness and community resilience. She represented Israel at the United Nations in a forum on victims of terror. She and her husband Erez live in Jerusalem and take great joy in their four daughters and four grandchildren.



Dominique Moïsi

*is a French political scientist and writer. He is the co-founder of the IFRI (Institut français de relations internationales) and is still active there as a special advisor after being the deputy director. Moïsi specialized in geopolitics and international relations and is the author of the famous book *The Geopolitics of Emotion: How Cultures of Fear, Humiliation, and Hope are Reshaping the World*, which has been translated in 20 languages. Since 2012, he is Visiting Professor at King's College London. Apart from his teaching activities, he regularly publishes articles and columns in the *Financial Times*, the *New York Times*, *Die Welt* and many other major newspapers.*



Diana Pinto

*is a Harvard trained intellectual, historian and writer living in Paris who has written and lectured widely on Jewish life in contemporary Europe. She has been the Director of the "Voices for the res publica" Project at the Institute for Jewish Policy Research, London. After the fall of the Berlin Wall, she was editor in chief of a pan-European review for the general public *Bélvédère* and subsequently a consultant to the Political Directorate of the Council of Europe on civil society in Eastern Europe and the former Soviet Union. Her latest, article appeared in *The New Republic*, is a response to American journalist Jeffrey Goldberg's article appeared in *The Atlantic* on "has the time come for the Jews to leave Europe?"*



Rabbi Michael Melchior

is the founder and chairman of The Mosaica Center for Religious Conflict Transformation in the Middle East. Rabbi Melchior is an internationally renowned Jewish leader, thinker and activist and a leading advocate for social justice in Israel, interfaith dialogue and a voice for peaceful co-existence.



Jonathan Arkush

was elected as President of the Board of Deputies of British Jews in May 2015. He previously served as Vice President for six years and chaired its Defence and Group Relations Division. He was known for his activism in defending shechita, brit milah and Israel in British civil society and the media, often in hostile environments. In his professional life Jonathan is a barrister and mediator specialising in property, commercial and probate law. He has a part-time judicial position as a deputy Chancery Master in the High Court. His communal involvements have included the campaign for Soviet Jewry, chairmanship of his community in Borehamwood & Elstree, founder and subsequently chair of governors of Hertsmere Jewish Primary School and vice-chair of the steering group to establish Yavneh College.



Josh Spinner

is Executive Vice President and CEO of The Ronald S. Lauder Foundation. Born in the United States, Josh has also lived in Canada, Israel, Belarus, and Germany. An ordained Rabbi, Josh is the founder of Lauder Yeshurun, a leading provider of Jewish education and outreach in Germany today, as well as the initiator of the reestablishment of the legendary pre-war “Hildesheimers” Rabbinical Seminary of Berlin. Until 2013, Josh served as Co-Chair of the Westbury Group of International Jewish Philanthropies, and today sits on the President’s Cabinet of the Conference of European Rabbis. Josh lives in Berlin with his wife, Joelle, and three daughters.



Dror Mor

is a founding partner and CEO of the Sdema Group. Under his direction, Sdema has emerged as a leader in threat-based. Dror served in Shin Bet for more than 20 years and retired in 2005 as the Deputy Head of the Operations Unit and Head of the Foreign Bureau of the Dignity Protection Division. In this position, Dror managed all aspects of security for the Prime Minister’s Bureau and the President’s Residence. During his service, Dror spent three years in New York as the Director of Security for the Israeli Mission to the United Nations and the Consulate General. Dror holds a Master of Administration Science and Marketing from Farleigh Dickenson University and a Bachelor of Arts (political science) from Haifa University. Dror served for four years in the IDF in an elite combat unit.



Uri Barak

is the VP of Physical Security at Sdema and is currently leading our efforts to manage the security of the Ronald S. Lauder Foundation Institutions across Europe and Russia.

Uri understands the threats facing Jewish communities throughout Europe, whether from sleeper terrorist cells or from the rising tide anti-Semitism on Europe’s streets. He is working with over 20 schools and community centers. Uri served as Security Director for El AL at JFK International Airport in New York and in Bucharest, Romania. In Israel, Uri served as a Duty Security Manager and Screening Shift manager at Ben Gurion International Airport. Uri holds a BA in Economics and Management from the College of Management (2005) and completed the Ministry of Defense Security Director course in 2005.



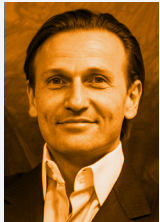
Gabriela Jiraskova

is currently involved in a crisis management project under the umbrella of the World Jewish Congress. The mission of the project is to help the Jewish communities to be more prepared to face crises such as terror attacks but also natural disasters and other adversities. Part of the mission is to also provide emergency assistance if needed. Gabriela became involved in the community security and crisis management as a volunteer in the Jewish community in Prague, Czech Republic in 2007. After a year break to finish a master’s degree at IDC in Herzliya, Israel, she continued as a staff member and full time employee of the security department in her own community. Since then Gabriela has also been responsible for the crisis management planning and crisis team development for the local team in Prague.



Péter Krekó PHD

is the Director of Political Capital Institute, a think-tank based in Budapest. He is also an associate professor of social and political psychology at ELTE University, and a co-chair of the EU Radicalisation Awareness Network Prevention working group. Political Capital has an extensive research project on European far-right and anti-Semitism. He regularly serves as commentator on the leading international media. His publications include: Seven statements on Hungarian anti-Semitism, A Russian spy in Brussels, The Conspiratorial Mindset in Europe, The Role of Stereotypes and Prejudices in Political Public Thinking, Study on the Situation of Prejudice and Intolerance in Hungary, Radical and Far-right Celebrities in the Private Media. Krekó recently defended his PHD thesis on the Social Psychology of Conspiracy Theories.



David Hatchwell

Since 2012, Mr. David Hatchwell is the Chairman of Excem Grupo, a diversified international group established in 1972 by his late father, leading philanthropist and visionary, Mauricio Hatchwell Toledano (ZL). The Group is active in cement, technology, investment banking and real estate. He is President of the Jewish Community of Madrid, Chairman of Taglit Europe, a Board of Trustees member of Maccabi World Union, and co-founder of ACOM, the leading Spanish pro-Israel public diplomacy platform, to name a few of his philanthropic activities. Mr. Hatchwell is a frequent speaker at international Jewish gatherings including AIPAC, the General Assembly of the Jewish Federations of North America and the President's Conference in Israel. Mr. Hatchwell is a proud father of three children (Yavne, Dayan and Magen) and lives in Madrid with his wife Natalia.

Building
Answers

common